





# Contents

- 3 One Future why now, why Stockport
- 4 The One Stockport Approach
- 7 Building on strong foundations
- 8 How One Future has been shaped
- 10 Delivering 5 big things together
  - 12 Good Jobs and Homes
  - 16 The Best Place to Grow Up
  - 20 Best Health and Care
  - 24 Thriving Neighbourhoods
  - 28 Clean, Green Transport
- 32 Holding ourselves accountable and measuring success
- 34 Doing brilliant things together for Stockport's Future

## One Future

### Why now, why Stockport

**Stockport is an ambitious place undergoing a spectacular transformation.**

A place to work and play, with green spaces and lots of culture on our doorstep, with excellent connections to Manchester, London, and the Peak District.

It's a place where residents, businesses and communities work together to make good things happen and get people the support they need.

A welcoming and friendly place, that is home to a vibrant voluntary, community, faith and social enterprise sector.

A place on the up. Named the best place to live in the North West. Bucking trends and pioneering town centre living.

But Stockport is not immune from the big challenges of our times.

Stockport is a place of stark inequality. The life chances of too many of our children are determined by their postcode and background and the attractiveness of the borough accentuates inequality.

We also need to decarbonise and respond to the global climate emergency.

Stockport is also changing and becoming more diverse.

It is ageing more quickly than any other borough in Greater Manchester - it is one of the top places to retire.

There are also big opportunities to embrace new digital technology and innovations – making sure that everyone in Stockport can thrive in a digital age.

These challenges facing us are big. They will take time. That's why One Future looks ahead to 2040. We want to ensure Stockport is a place that is resilient to whatever changes and opportunities will come in the future.

**Best place to buy your first home** THE  **TIMES**

**One of the coolest little corners of the country**

**Best up and coming area to invest in** THE  **SUNDAY TIMES**

**There's something special in the air**  
**The Guardian**

**A magnet for interesting independent businesses**

**Best places to live in the northwest of England** THE  **TIMES**

# The One Stockport Approach

Stockport has the ingredients to make great things happen – a strong resident skill base, great connectivity, local innovators and brilliant partnerships.

Our approach is characterised by:

## 1 Ambitious collective vision

Across businesses, community groups and public partners set out in our One Stockport Borough Plan with the reaffirmation of those ambitions within One Stockport: One Future.

## 2 Strong civic leadership and brilliant partnerships

A decade of work and an unwavering commitment to our borough from strong and sustained civic and political leadership and great relationships between partners.

## 3 Caring, vibrant and ambitious local communities

People who care about their local area and neighbours, embrace change and get involved.

## 4 Proven track record of making change happen

Our town centre is bucking trends and pioneering town centre living at a scale unparalleled in the UK.

## 5 Commercial acumen and the ability to leverage investment

Over recent years we have attracted more than £1billion of public and private investment in Stockport.

## 6 Harnessing the power of Greater Manchester devolution deals and national funding

In areas such as investment in our town centre and Stockport family.





# Building on strong foundations

## One Heart, One Home, One Future Our Borough Vision and Ambition

One Stockport: One Future is the next phase of our borough plan.

It sets out how we will work together to tackle the challenges set out so Stockport can be the best place to live happy and healthy lives, a place where anything is possible, a place that everyone, right across the Borough can be proud of. It clearly sets out what we will do together.

Though we aren't starting from scratch. This builds on our One Stockport Borough Plan launched in March 2021. A shared plan, developed in partnership across Stockport and shaped by the voices of our communities and residents.



### ONE HEART

At the heart of Stockport are its people and the communities in which they live.

- 1 A caring and growing Stockport**  
Stockport is a great place to grow where children have the best start in life.
- 2 A healthy and happy Stockport**  
People live the best lives they can - happy, healthy and independently.
- 3 A strong and supportive Stockport**  
Confident and empowered communities working together to make a difference.



### ONE HOME

Stockport is a great place to live, where no one is left behind.

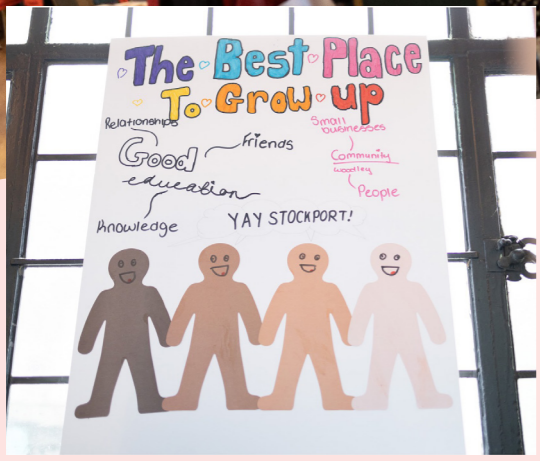
- 1 A fair and inclusive Stockport**  
A borough for everyone - diversity and inclusion is celebrated and everyone has equity of opportunity.
- 2 A flourishing and creative Stockport**  
Stockport is an exciting place to live, where people are active and celebrate the culture.
- 3 A climate friendly Stockport**  
Stockport is a responsible and sustainable borough.



### ONE FUTURE

Growing, creating and delivering a thriving future for Stockport.

- 1 An enterprising and thriving Stockport**  
A thriving economy which works for everyone.
- 2 A skilled and confident Stockport**  
Everyone has the opportunities and skills to successfully achieve their ambitions.
- 3 A radically digital Stockport**  
A digitally inclusive and dynamic borough.



# How One Future has been shaped

## Who has shaped One Stockport?

One Stockport, One Future has been shaped by listening to the young people of Stockport, local businesses, community organisations and residents. In total over 450 people have contributed to One Future.

As part of our engagement on One Future, Listen! (Stockport's Youth Alliance) chose One Future as the focus of their first youth summit in February 2024. Over 150 young people from all 15 secondary schools and colleges from across the borough took part.

These conversations build on those which shaped the One Stockport Borough Plan. The ideas and views shared at this time remain incredibly important and have continued to inform our plans for the future.

Reaching out to many different communities, organisations and partners across Stockport has allowed us to listen to as many voices as possible to help shape and create One Future.



## What we heard

It is refreshing to see a long-term strategic plan with impact for future generations

It is inspiring to see such positive ambitions for Stockport, this is so important in the current context

The power of the five big things is how they come together

We need to support communities to help themselves and create a sense of safety in local areas

Access to services like mental health for young people is important

It is really important that Stockport creates a culture where young people feel they are involved and have an impact

We need more affordable and social housing and protected jobs for local residents so young people can afford to stay in Stockport

Better and more accessible transport and access to more cycle and walking routes is a big win

Future generations should live in a beautiful town where everyone feels safe, everyone feels loved and feels like a community

We need to celebrate the characteristics of the different neighbourhoods and communities that make up Stockport

Stockport is becoming more diverse and we need to reflect this in our story

This collective input into the development of One Future is so important. We have built this feedback into the priorities and have prepared a summary of all engagement which is available alongside this One Future plan.

We will continue to work with local people, businesses, communities and together as partners to shape and deliver One Future.



# What will we do

## Delivering 5 big things together

To be the best place to live happy and healthy lives over the next fifteen years, we must have a relentless focus on the biggest challenges facing our borough:



**Fair and Inclusive. Stockport is a great, diverse place to live, where everyone can thrive.**

We know that the factors that drive inequality interact with one another. In building a fair and inclusive Stockport we want to ensure that everyone has the opportunity to be happy, healthy and succeed in life.



**Climate Action Now. Creating a green print for Stockport so it is a climate friendly place to live, work, play and invest.**

We recognise that urgent action is needed to reduce emissions and adapt to the effects of extreme weather and warming temperatures.

No one thing or one organisation alone can address either of these. They are complex and the different issues intersect.

We have identified the 5 big things we consider will act as long-term catalysts for change and ultimately reduce inequality in our borough over the next 15 years. These are:



Our 5 big things do not cover all the work we do together. They are the things that we believe, if achieved, will affect many other areas, making Stockport stand out as one of the best places in the country to live a **happy and healthy life**.

Addressing inequality and responding to climate change are the lenses through which all of our activity will be developed, tested, and progressed.

The things we are talking about cannot be delivered without you and they won't be delivered in a year or two. They will take years, but by working together we will have the scale and power to shape a positive future for Stockport.

1

# Good Jobs and Homes



## Why is it important?

Secure, quality housing for all and access to good jobs underpins good lives. We know Stockport is an attractive place to live and work so the demand for housing is high and housing affordability is a growing challenge.

That is why the regeneration of Stockport's town and district centres is crucial. It will create more homes and fuel the growth of businesses and jobs.

Our aim is to be one of the best places in the UK to start and grow a business.

Due to our incredible transport connectivity, housing market and growth opportunities Stockport plays a crucial part in the success of the whole region. The growth and investment generated by our local businesses is really important to provide opportunities to our residents.

## Where are we starting from?

- Our £1 billion town centre regeneration programme is the largest in the country and has attracted national recognition.
- Building new homes on previously developed land has fuelled this regeneration success.
- Our proximity and exceptional connectivity to central Manchester and the wider regional and national transport network.
- The Greater Manchester Combined Authority (GMCA) has identified the area between Stockport and Manchester Airport as one of six strategic 'Growth Locations'.

## How we will go further?

### Building more homes in the town and district centres using already developed land.

Through our interventionist approach we are successfully tackling the barriers to regeneration that have held back towns for generations, delivering on a scale of ambition that is unmatched by any other town in the country.

Underpinning this success has been our ability to rethink and bring back into use previously developed land and securing private sector investment. Our interventionist approach in the early days – direct investment and delivery has attracted growing private investment.

### Ambitious plans for the east of our Town Centre to create accessible and affordable housing.

Over the next fifteen years we want to build on our regeneration success by becoming a national leader in urban living of the future. Our sights are now turning to the east of the town centre and our district centres where we believe there is potential to deliver an even greater number of new homes, with an emphasis on affordable homes for people at all stages of life. Town centre living at this scale is rare in the UK but is crucial to the long-term challenge of housing our growing population, breathing life back into our high streets and to achieve net zero.



### Being the best place to start a new business. Creating 1,500 new businesses and getting an additional 6,500 people in employment.

Working with partners across Greater Manchester's Southern Growth Corridor, over the next fifteen years we want to unlock the potential for this area to become home to thriving businesses creating high quality jobs and driving economic growth.

Stockport Exchange has demonstrated Stockport's appeal to major businesses. Building on this momentum and with the necessary investment in our transport and digital infrastructure and start up space, we believe our town and district centre business base could be transformed, with clusters of business and professional services companies benefiting from our quality value proposition relative to the city centre and the global investment opportunities being created around Manchester Airport and the wider Southern Growth Corridor.

### Creating jobs and skills in growing industries such as - the green economy, digital, construction, health and care and transport.

Our One Future ambitions for a new hospital and health hub in the town centre and major expansion of housing development on already developed land have the potential to act as powerful generators of economic opportunity. We want to harness these opportunities to maximum effect, making this investment the driver of sustained growth of good jobs and long-term career options for local people at scale.

Bringing these investments to the heart of our borough provides a powerful opportunity to build long-term skills and employment pathways into these key sectors for people in the borough. Our commitment is to create a local skills approach which mirrors these priority sectors, providing world class opportunities for Stockport residents and the skills and expertise needed for employers to thrive here.



1

# Good Jobs and Homes

## Route Map



A strong and resilient local economy, with a choice of homes for all and thriving and growing businesses creating good jobs

National exemplar for town centre living

Town Centre West regeneration plans fully delivered

Establishment of Stockport Mayoral Development Corporation to regenerate Town Centre West



2025

2030

2035

2040

Cheadle Eco Business Park fully occupied

High-Speed digital connectivity full fibre across the borough

Work underway to deliver plans for accessible and affordable homes in the east of the town centre

Completion of final phase of Stockport's business district - Stockport Exchange

Delivery of plans for accessible and affordable homes in the east of the town centre complete

Best place in Greater Manchester to grow a business



Delivered in line with our fair and inclusive and climate action now priorities

# 2

## The Best Place to Grow Up



### Why is it important?

We want all children, in Stockport, to grow up happy, healthy, with confidence, ambition and surrounded by love, care and kindness.

The vast majority of children and young people in Stockport live in settled families, benefit from high quality funded education places and do well at school but there are still too many who face barriers that prevent them from reaching their potential.

The 5 big things set out in this plan are crucial to creating the right conditions so that all families can thrive.

Our work with children and young people is founded on the belief that every child, young person, and family matters equally.

### Where are we starting from?

- Growing up in Stockport is already a great experience for many. We want to build on this and make sure all children, young people and families can thrive.
- Great relationships and partnerships. Our nationally recognised Stockport Family approach is the foundation of how we work together.
- A growing economy but we can do more to make sure everyone can access the skills, training, and education they need for the future.
- Good education provision which we want to strengthen.

### How will we go further?

#### Easy access to top-quality early years support for all 0–5-year-olds, helping to narrow inequalities.

We need every child to have the skills and confidence they need to start school ready to learn, this is fundamental to supporting good outcomes later in life. The journey to school readiness starts from pre-birth. It is developed through relationships and interactions in the home with parents and family members, in the early learning environment, and the wider community. Creating easy access to top-quality early years support for all 0–5-year-olds will help to narrow inequalities in school readiness. We will focus on the early years' workforce, creating an early year's hub that attracts talent to these roles. We will also ensure that early year's employees can access affordable housing so they can live and work in Stockport.

#### Having excellent inclusive schools right across the borough which support all children to achieve their potential.

We will further develop our strong partnerships to make it easier for school leaders to run great schools. We will build a new inclusive secondary school and create more outstanding specialist provision for children and young people with autism and those with social, emotional and mental health needs. We will improve our school estate, creating quality and choice for everyone. We will also tackle the challenge of recruitment and retention of teachers through joined up approaches across housing, work and skills.

#### Young people involved in shaping the future of Stockport.

Children and young people hold the key to the future. We want to create opportunities for all our children and young people to succeed, whatever their background and circumstances. This includes making sure their voices are heard and empowering them to shape Stockport for the next generation. We will work closely with Listen!, Stockport's new youth alliance to provide opportunities for young people to be involved in discussions. We will connect this group with leaders across Stockport so that their voices are heard by local decision makers and so they we respond to them in a meaningful and effective way.

#### Ensuring everyone has access to the support, opportunities and skills to achieve their ambitions.

We are committed to supporting accessible, fair and good opportunities for all our residents to learn the skills they need to achieve their ambitions, whilst also ensuring businesses and other organisations have access to the talent they need to be successful and grow. We will make our skills system more responsive to businesses now and in the future. We will work in partnership with schools, post 16 partners and employers to broaden our offer and improve its quality. We will support young people with improved careers education, information and guidance. Ensuring we support those who most need it to access the work and skills they need to succeed.



# 2

## The Best Place to Grow Up

### Route Map



2025

2030

2035

2040

Youth Alliance and first Youth Summit established

Great schools and pioneering model of wrap around support through Stockport Family

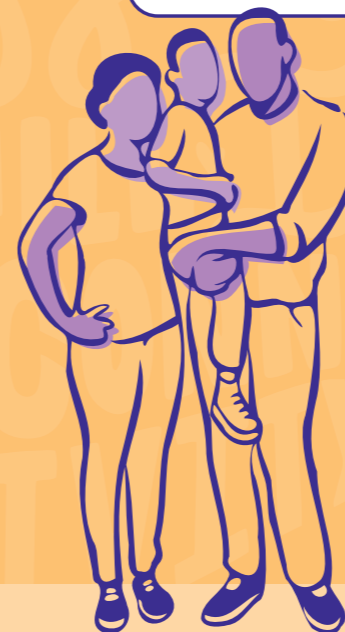
New town centre secondary school

A new early years' workforce training and development hub to support careers in the sector

A significant investment programme in our school estate

Skills education and training responsive to immediate and medium longer term needs

Improved careers education, information and guidance, linked to clear work and training pathways



Children and Young people are able to achieve their ambitions and aspirations

Excellent schools right across the borough for everyone, with every child included in their success



Delivered in line with our fair and inclusive and climate action now priorities

# 3

## Best Health and Care



### Why is it important?

There are big changes and challenges facing the health, care and wellbeing of the residents of our borough: our population is changing; inequalities across our borough have impacts on the health of our residents throughout their lives; public services are under acute pressure; and increasing risks from, extreme weather, food insecurity and harder to treat infections mean we need to plan now.

We need to make it easier for everyone to live happy, healthy, and independent lives. Where people can access the care and support,

they need as close to home as possible and ensuring people can remain connected with the people and places that are important to them.

### Where are we starting from?

There is lots of big ambition for innovation in how we provide the best in health and care in Stockport.

- The relationships across health and care organisations are stronger than ever.
- Brilliant community, voluntary and local care organisations.
- Like many areas, we know that our current health and care system is under pressure as demand for support continues to increase beyond services current capacity.
- We are a place people choose to retire to and are ageing faster than any other borough in Greater Manchester.
- We want to bring together services, organisations and groups in one place – creating spaces where people can connect and feel they belong.
- Working together to develop new ways of working to provide Intermediate Care at the St Thomas' site.

### How will we go further?

**Public services will work together with voluntary and community organisations and local people.**

This is about providing support, advice and help before circumstances become more serious.

To do this we all need to work together to deliver seamless integrated advice, support and care in neighbourhoods close to where people live. Making sure people can access the right help at the right time and using new digital technologies so that people have the information they need to understand their own health needs. This will help everyone live a good life and reduce demand on acute and crisis services.

**Brand new hospital and health-hub at the heart of the town centre.**

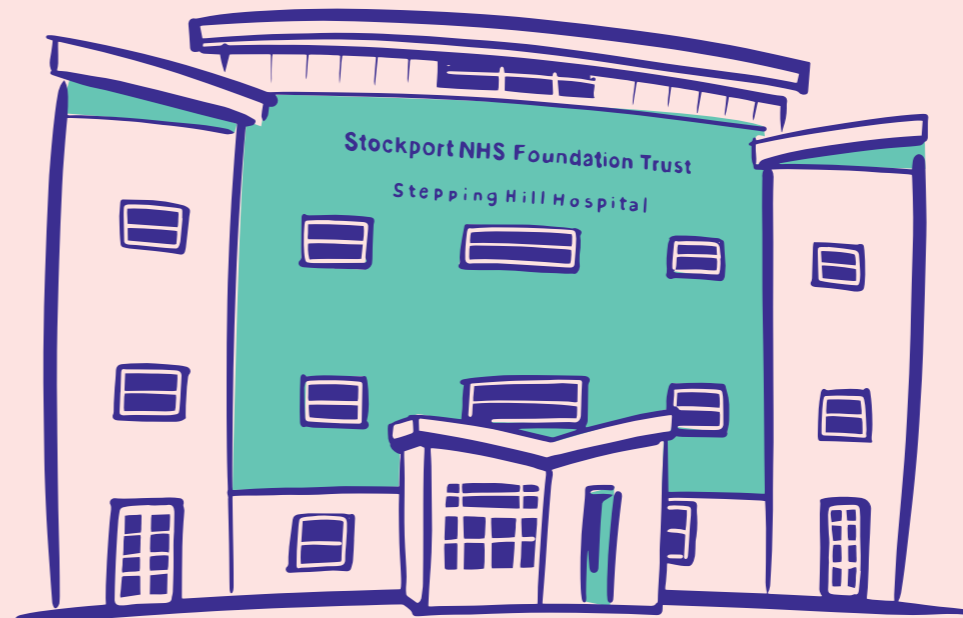
The new proposed hospital gives us the opportunity to design our health and care provision so it will work for us in the future. The hospital alongside the new primary care health hub will give access to a range of services providing the right care at the right place and right time.

As well as providing the best health and care, the new hospital and primary care health hub will be a site for health innovation with opportunities for greater collaboration with universities, research and businesses, bringing jobs, increased footfall and activity in our town centre.



### Be an age friendly borough.

Our homes and neighbourhoods need to be designed for all ages of life. This means good transport within a short walk or drive from home, a range of different types of housing options such as technology to help people live at home and extra care housing, shared indoor and outdoor spaces, walkable streets, a good mix of shops, services and events, good internet access and people are confident, using digital technology.



# 3

# Best Health and Care

## Route Map



A model of health and care which is personalised, predictive and population based

Opening of St Thomas – new intermediate care and housing site. Supporting wider learning on health and care innovation

A brand-new hospital facility and primary care health hub to the town centre



2025

2030

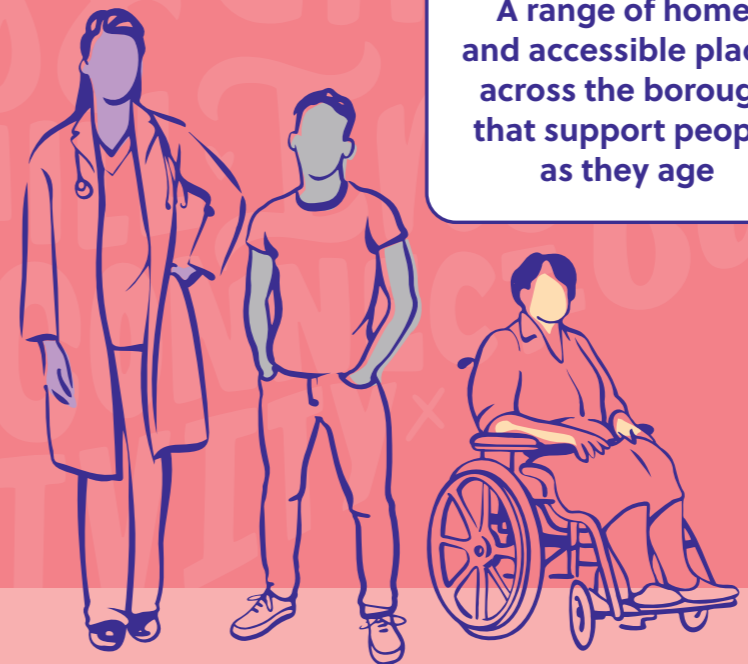
2035

2040

Taking a health equity approach to investment to tackle inequalities across the borough

Where they can be most impactful, joined up health and care services are delivered within our neighbourhoods providing better access to support for residents

Services delivered in our neighbourhoods, providing better access to joined up health and care services



A range of homes and accessible places across the borough that support people as they age

A brand new hospital facility and primary care health hub to the town centre

Delivered in line with our fair and inclusive and climate action now priorities



# 4

## Thriving Neighbourhoods



### Why is it important?

Stockport is a borough full of unique neighbourhoods, where people value a sense of community, feeling safe and having pride in their local area.

However, we know that there are stark inequalities between our neighbourhoods with the difference in average life expectancy being as much as 11 years. That is why we have to take a local approach and think about how the 5 big things come together in a local area.

Our vision in 15 years' time is for everyone to benefit from thriving neighbourhoods which are clean, green and safe places to live and visit.

### Where are we starting from?

- Our Stockport Family approach is leading the way so that families get what they need in one place.
- Our neighbourhoods and prevention programme is bringing public services and communities together, building relationships and using local intelligence.
- Stockport has a brilliant voluntary, community, faith and social enterprise sector and fantastic local businesses.



### How will we go further?

#### Local people participating in the future of their neighbourhoods.

This starts with communities, leading the changes they want to see in their area in the future. We want to enable communities to use their knowledge, skills, and assets to identify and respond to any challenges that they face, and to thrive. In doing this we can design services around the strengths and needs of the local community.

#### Joining up public services, working together, alongside local people as a single team.

We will put people at the heart of what we do. We will work together across public services in local areas so that we are breaking down barriers and providing a seamless service. It shouldn't matter which team, organisation or service provides the support - it should feel connected. It also means being able to access great services locally.



#### Vibrant, clean, and safe places where people can socialise, make friends, and access a range of culture, sport and leisure activities.

Living locally with easy access to everything a person needs is important. It is the local sports clubs, cultural venues, community groups, places of worship, restaurants, shops and parks that make our neighbourhoods special. This means supporting a vibrant, voluntary, community, faith and social enterprise sector and thriving local businesses to provide local employment opportunities. It means safe, clean and green spaces in all neighbourhoods – places to meet, be active and for children to play.

#### Creating a digitally enabled borough where technology helps people live independently.

Stockport is a digital borough. From global digital businesses to an award-winning Digital Inclusion Alliance, digital public services leading the way nationally and new digital partnerships. We will build on these strong foundations to ensure we have the infrastructure across all neighbourhoods that mean residents and businesses in Stockport can thrive in a digital era. We will prioritise people over technology.

# 4

## Thriving Neighbourhoods

### Route Map



Our neighbourhoods are safe places, buzzing with activity where everyone can thrive

A joined up public service offer at a local level

Innovation and business workspace in every neighbourhood

Stockport Town of Culture



Stockroom opens

Investment in local community assets to support local economies and communities to thrive

Marple Community Hub opens

Access to high speed, quality internet wherever you live or work

Stockport is the home to digital start-ups and we are a 100% digital inclusive borough



Delivered in line with our fair and inclusive and climate action now priorities



# 5

## Clean, Green Transport



### Why is it important?

Advances in technology and the need to respond to the emerging climate emergency will impact transport and travel trends.

We need to keep pace with this and enable future growth and developments. Investing in public transport, active travel infrastructure and smart digital technology is crucial so we can meet our ambitious local and regional net zero commitments.

We want to provide more sustainable transport options for our residents so we can create well-connected green, inclusive and safe neighbourhoods.

### Where are we starting from?

- Stockport's exceptional transport connectivity is one of our biggest assets.
- Lots of progress in creating a public transport network fit for the future including our brand-new transport Interchange.
- Our active infrastructure is not sufficient to meet the needs of a rapidly growing population.



### How will we go further?

#### Bringing the Metrolink to Stockport.

Having a Metrolink / tram train line would be transformational for the borough and Greater Manchester. Connecting the Metrolink to Stockport and linking it to Stockport's railway station will relieve pressure on the city centre stations whilst also providing access to the Southern Rail Gateway. Considerations for how local businesses and residents could benefit from a Metrolink, alongside other public transport and active travel routes, will be an important part of all of our planning for the future of the town and district centres.

#### Facilitating a zero-emission bus network which connects all our neighbourhoods.

Stockport has an excellent bus network which gives residents good, regular access to surrounding areas. We believe we can do more by taking the opportunities of bus franchising and through the introduction of the Bee Network giving greater access and opportunities across the borough and beyond. We want to create neighbourhoods that are safe, clean and enjoyable to walk around clean and green public transport connections.

#### Securing further national investment in Stockport Railway Station.

Stockport is Greater Manchester's Southern Gateway and the third most used station in the Northwest (outside Manchester and Liverpool) with 5,000 daily commutes to Manchester and more than 2 million people living within a 30-minute drive. Stockport will continue to be the Southern Gateway to Greater Manchester for decades to come, providing crucial connectivity to the West Coast Mainline and wider national rail network for the whole conurbation. We have secured funding from Transport for Greater Manchester (TfGM) to progress the business cases for the redevelopment of Stockport Railway Station.

#### Making walking and cycling more accessible for residents.

We want Stockport residents to travel to work or school, within and between neighbourhoods using more environmentally sustainable and healthier forms of transport. This means walking or cycling more often, providing easy access to district centres and green spaces to further help to build connections and a positive sense of community and belonging.

# 5

# Clean, Green Transport Route Map



Integrated transport network linking bus, tram, train, walking and cycling which connects all our neighbourhoods

Bus Franchising and roll out of the Bee Network

Metrolink extension secured

Significant progress on walking and cycling network secured



Stockport Interchange

Zero Emission Electric Bus Network

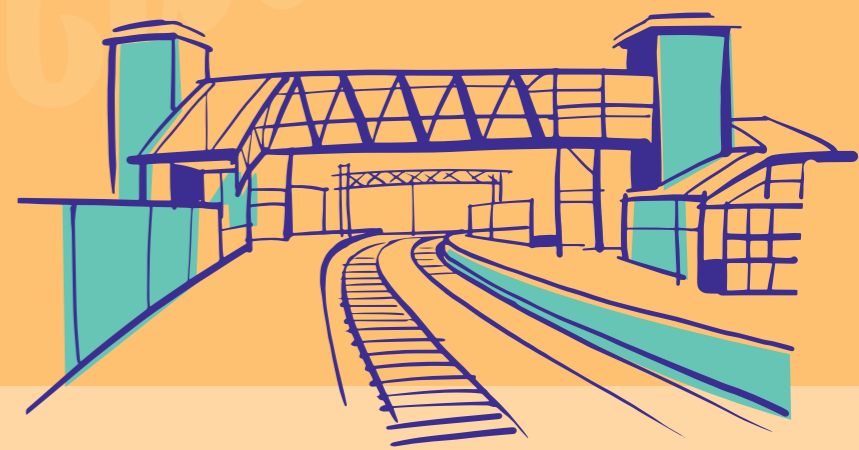
Cheadle Railway Station opens

New investment into Stockport railway station

Greater Manchester control of suburban rail network

Metrolink line complete

Northern Powerhouse Rail Network begins



Delivered in line with our fair and inclusive and climate action now priorities





# Holding ourselves accountable and measuring success

At the heart of our work is a shared vision to ensure that everyone in Stockport is able to thrive and live a happy and healthy life.

Our two big measures of success:

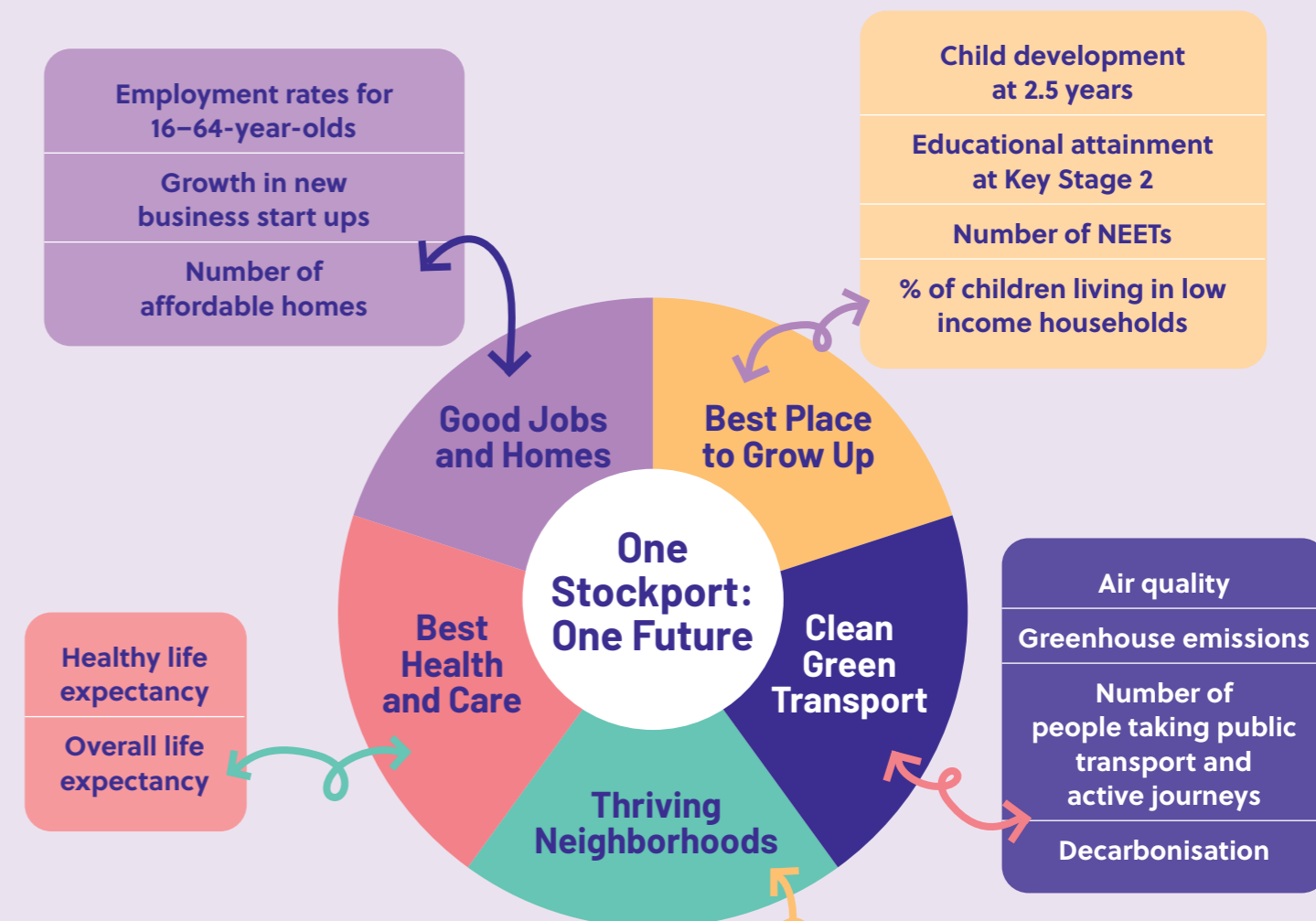
**1 Sustained reduction in inequalities:**  
Our aim by 2040 is that the gap in outcomes within and between our communities is reduced.

We believe that overall success can only be celebrated if we achieve both of these measures.

**2 Leading the way nationally:**  
Our aim by 2040 is to be in the top 10% nationally in areas such as employment, education, health, and wellbeing.

They won't be achieved overnight. Achieving improvements in any one area will only come about through concerted action across all our big things.

We have identified measures against each of our five big things so that we can monitor progress and understand success.



# Residents, Communities, Businesses & Public Services Doing brilliant things together for Stockport's Future

**We have already achieved  
so much together. Thank You!**

Whether that is checking in on your neighbours;  
or lending your time to local community activities,  
organisations or events; to shopping in one of our fantastic  
local district centres; to investing in the regeneration of our  
borough across Stockport; to our dedicated public servants  
working hard for our residents and so much more.

Thank you. One Stockport: One Future can only be achieved  
if we all work together. We know we can do this, because we  
have done so much together already.

**This is our commitment to Stockport's future.**



# ONESTOCKPORT

[www.stockport.gov.uk](http://www.stockport.gov.uk)  
[www.onestockport.co.uk](http://www.onestockport.co.uk)